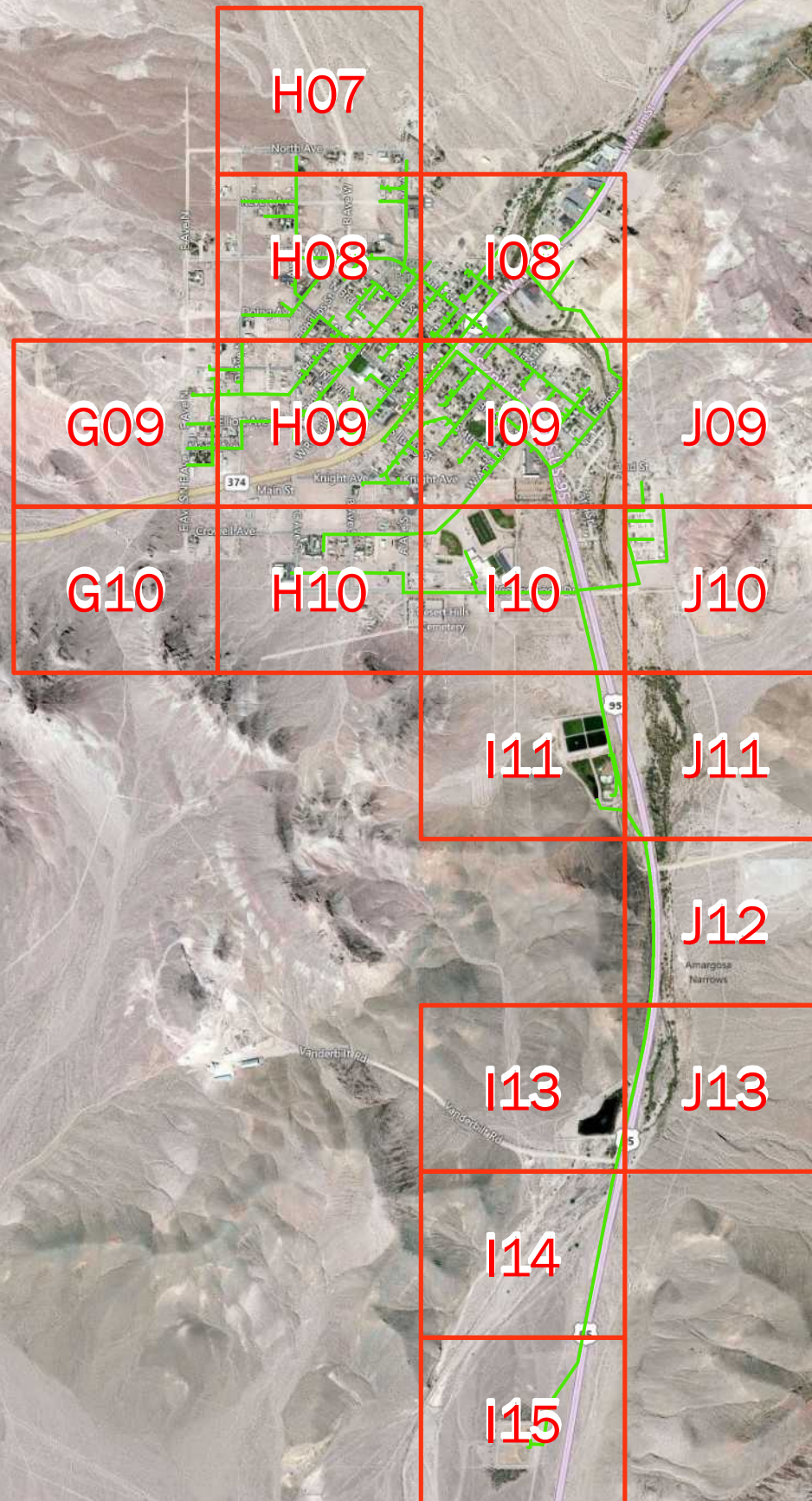


# Beatty, NV Water & Sanitation District Sewer System Runbook



Sewer System  
Map Book Page Index





C:\client\beatty\Map\SewerSystem\Beatty\_SewerRunbook\_DD\_11X17.mxd. Author: MForrest. 12/19/2012



**FARR WEST**  
ENGINEERING

1" = 200'

# Beatty, NV Sewer System Runbook

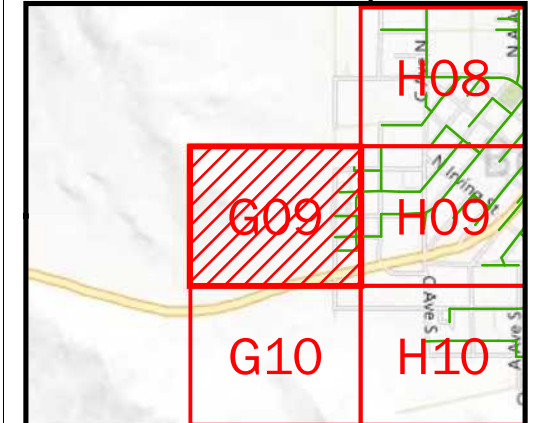
## Legend

	Sewer Manhole		Sewer Pipe Type
	Lateral Cleanout		Gravity Main
	Main Line Cleanout		Forced Main
	Air Release		Leach
	Sewer Inlet		Lateral
	Sewer Outlet		Other
	Sewer Pump / Lift Station		Casing
	Pond		Detail Boundary

## Notes:

Background Imagery & Street Information Data pulled from Bing Online Imagery & Streets

## Index Map





C:\client\beatty\Map\SewerSystem\Beatty\_SewerRunbook\_DD\_1X17.mxd. Author: MForrest. 12/19/2012



**FARR WEST**  
ENGINEERING

1" = 200'

## Beatty, NV Sewer System Runbook

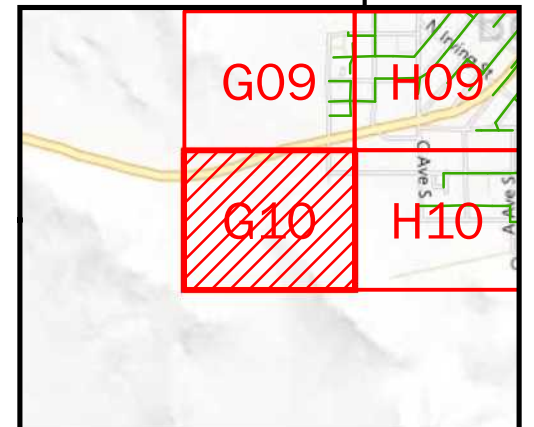
### Legend

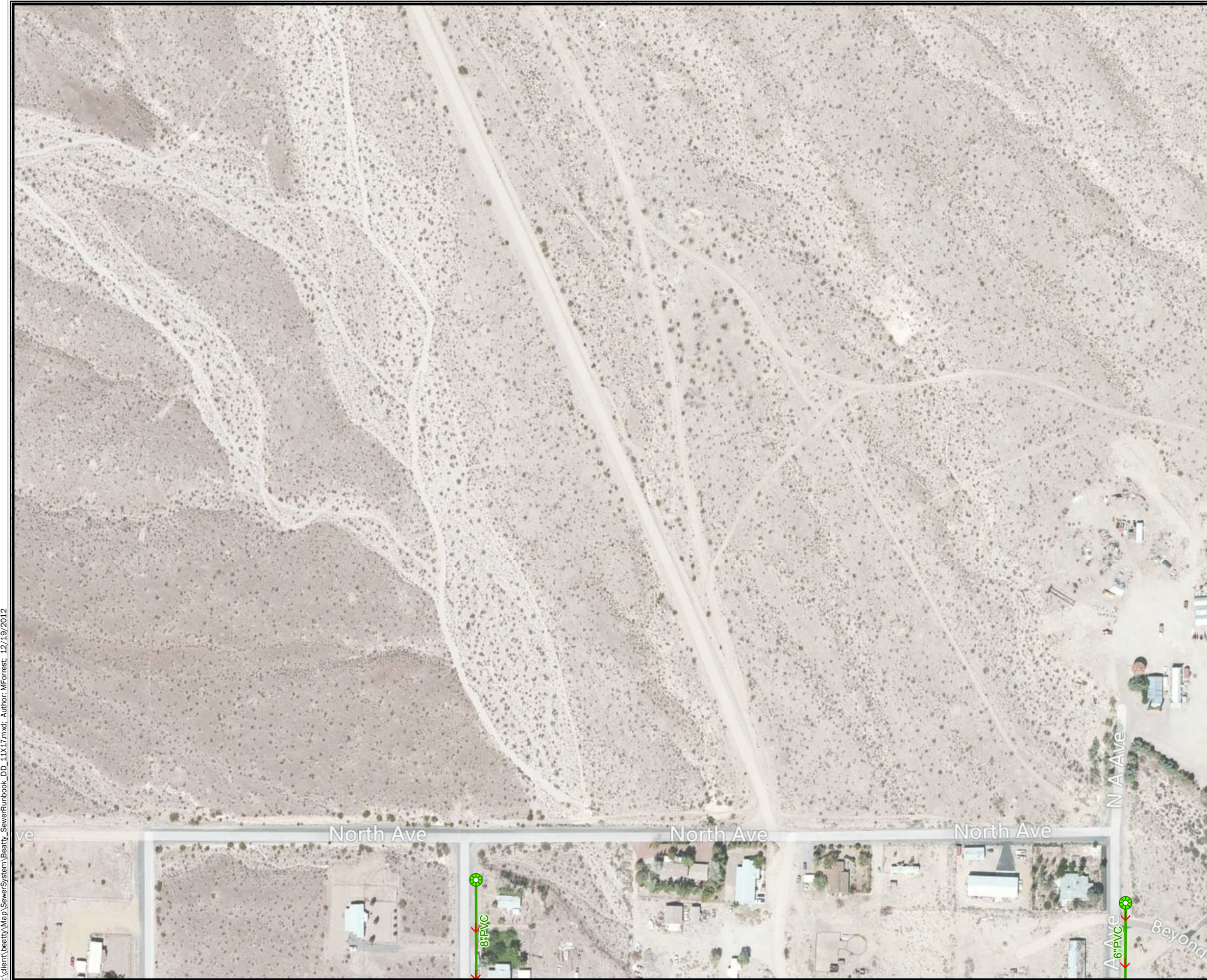
	Sewer Manhole	<b>Sewer Pipe Type</b>
	Lateral Cleanout	Gravity Main
	Main Line Cleanout	Forced Main
	Air Release	Leach
	Sewer Inlet	Lateral
	Sewer Outlet	Other
	Sewer Pump / Lift Station	Casing
	Pond	Detail Boundary

### Notes:

Background Imagery & Street Information Data pulled from Bing Online Imagery & Streets

### Index Map





C:\client\beatty\Map\SewerSystem\Beatty\_SewerRunbook\_DD\_11X17.mxd; Author: MForrest; 12/19/2012



**FARR WEST**  
ENGINEERING

1" = 200'

## Beatty, NV Sewer System Runbook

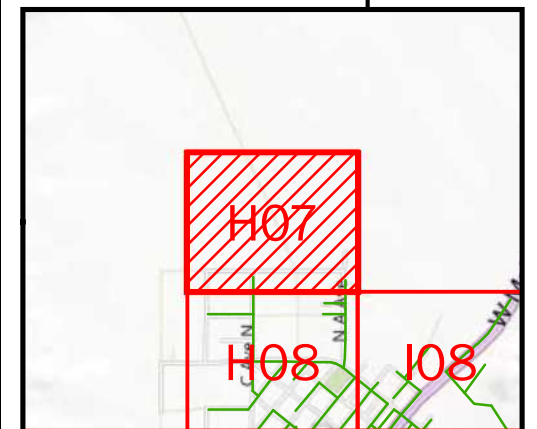
### Legend

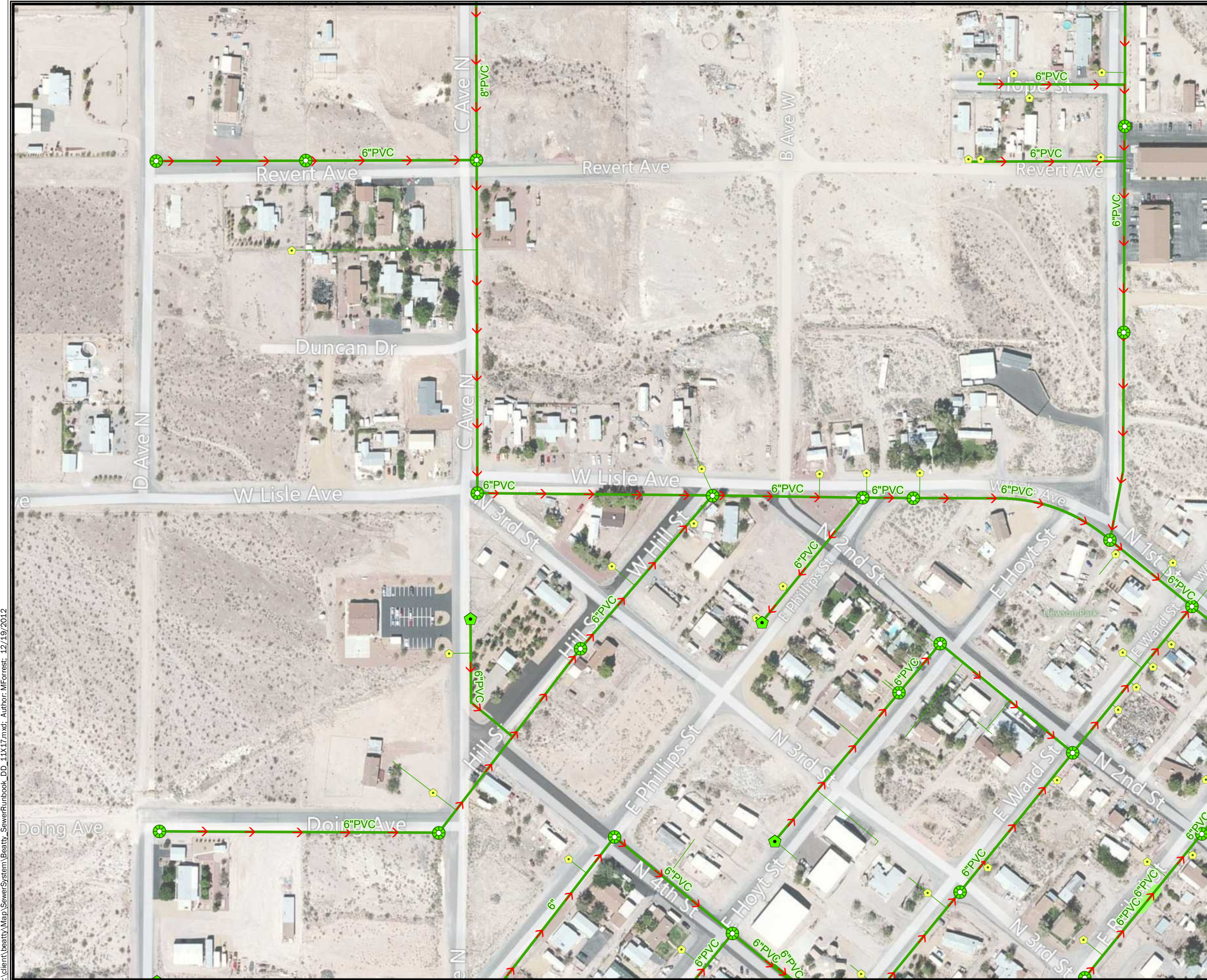
Sewer Manhole	<b>Sewer Pipe Type</b>
Lateral Cleanout	Gravity Main
Main Line Cleanout	Forced Main
Air Release	Leach
Sewer Inlet	Lateral
Sewer Outlet	Other
Sewer Pump / Lift Station	Casing
Pond	Detail Boundary

### Notes:

Background Imagary & Street Information Data pulled from Bing Online Imagary & Streets

### Index Map





C:\valent\beatty\Map\SewerSystem\Beatty\_SewerRunbook\_DD\_11X17.mxd; Author: MForrest; 12/19/2012



**FARR WEST**  
ENGINEERING

1" = 200'

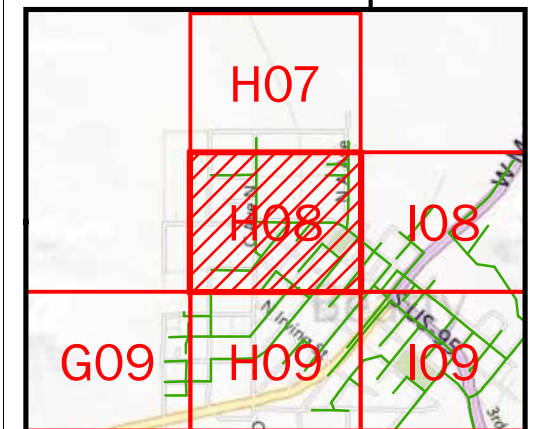
## Beatty, NV Sewer System Runbook

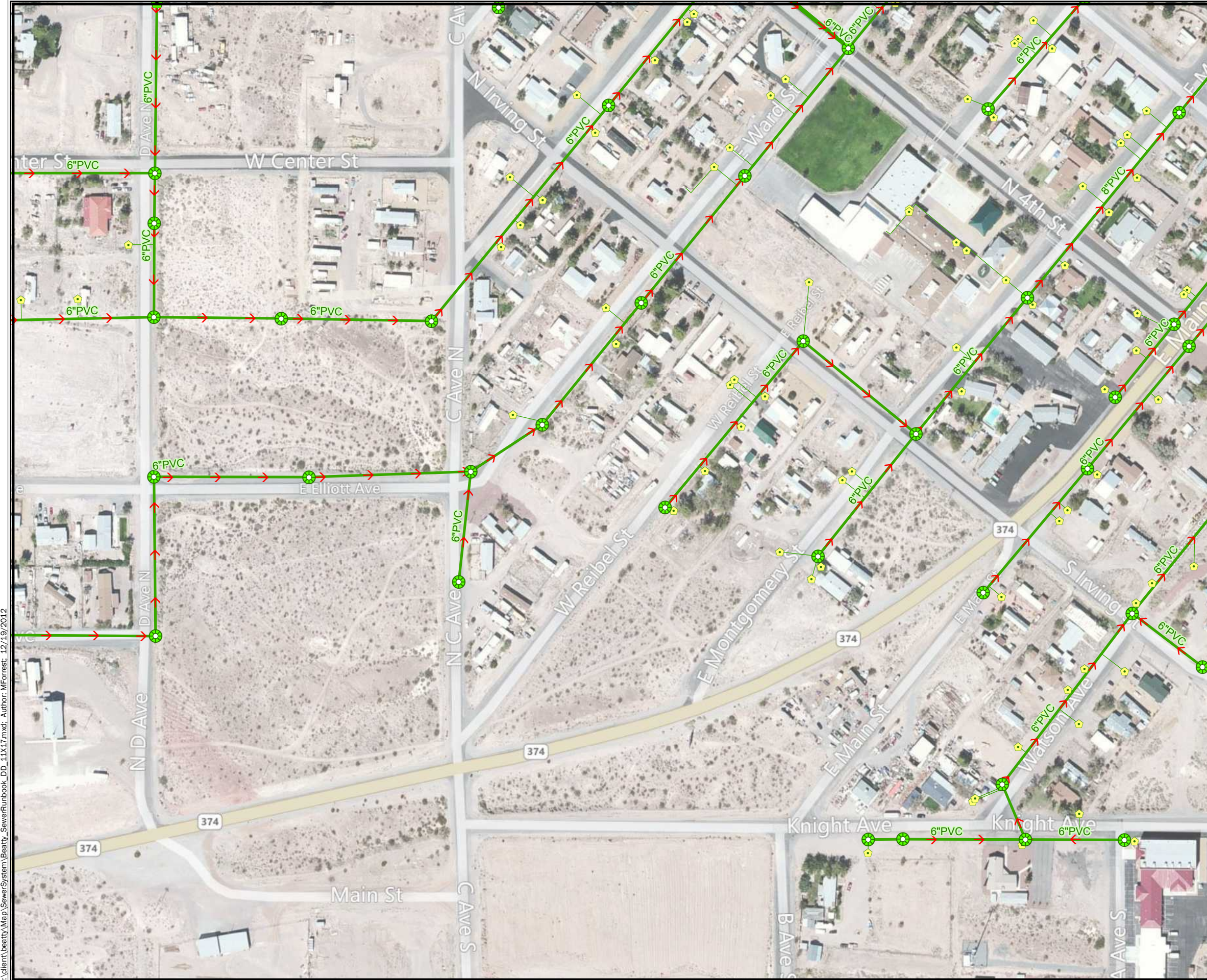
### Legend

	Sewer Manhole		Sewer Pipe Type
	Lateral Cleanout		Gravity Main
	Main Line Cleanout		Forced Main
	Air Release		Leach
	Sewer Inlet		Lateral
	Sewer Outlet		Other
	Sewer Pump / Lift Station		Casing
	Pond		Detail Boundary

**Notes:**  
Background Imagery & Street Information Data pulled from Bing Online Imagery & Streets

### Index Map





C:\valent\beatty\Map\SewerSystem\Beatty\_SewerRunbook\_DD\_1X17.mxd. Author: MForrest. 12/19/2012



**FARR WEST**  
ENGINEERING

1" = 200'

## Beatty, NV Sewer System Runbook

### Legend

- |  |                           |  |                 |
|--|---------------------------|--|-----------------|
|  | Sewer Manhole             |  | Sewer Pipe Type |
|  | Lateral Cleanout          |  | Gravity Main    |
|  | Main Line Cleanout        |  | Forced Main     |
|  | Air Release               |  | Leach           |
|  | Sewer Inlet               |  | Lateral         |
|  | Sewer Outlet              |  | Other           |
|  | Sewer Pump / Lift Station |  | Casing          |
|  | Pond                      |  | Detail Boundary |

**Notes:**  
Background Imagery & Street Information Data pulled from Bing Online Imagery & Streets

### Index Map





C:\client\beatty\Map\SewerSystem\Beatty\_SewerRunbook\_DD\_11X17.mxd. Author: MForrest. 12/19/2012



**FARR WEST**  
ENGINEERING

1" = 200'

## Beatty, NV Sewer System Runbook

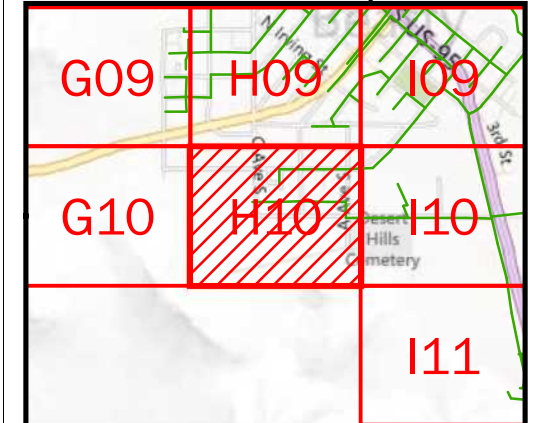
### Legend

- |  |                           |  |                 |
|--|---------------------------|--|-----------------|
|  | Sewer Manhole             |  | Sewer Pipe Type |
|  | Lateral Cleanout          |  | Gravity Main    |
|  | Main Line Cleanout        |  | Forced Main     |
|  | Air Release               |  | Leach           |
|  | Sewer Inlet               |  | Lateral         |
|  | Sewer Outlet              |  | Other           |
|  | Sewer Pump / Lift Station |  | Casing          |
|  | Pond                      |  | Detail Boundary |

### Notes:

Background Imagery & Street Information Data pulled from Bing Online Imagery & Streets

### Index Map





C:\valent\beatty\Map\SewerSystem\Beatty\_SewerRunbook\_DD\_1X17.mxd. Author: MForrest. 12/19/2012



**FARR WEST**  
ENGINEERING

1" = 200'

## Beatty, NV Sewer System Runbook

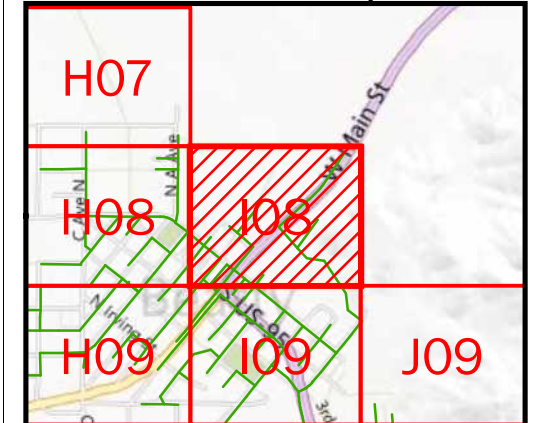
### Legend

	Sewer Manhole		Sewer Pipe Type
	Lateral Cleanout		Gravity Main
	Main Line Cleanout		Forced Main
	Air Release		Leach
	Sewer Inlet		Lateral
	Sewer Outlet		Other
	Sewer Pump / Lift Station		Casing
	Pond		Detail Boundary

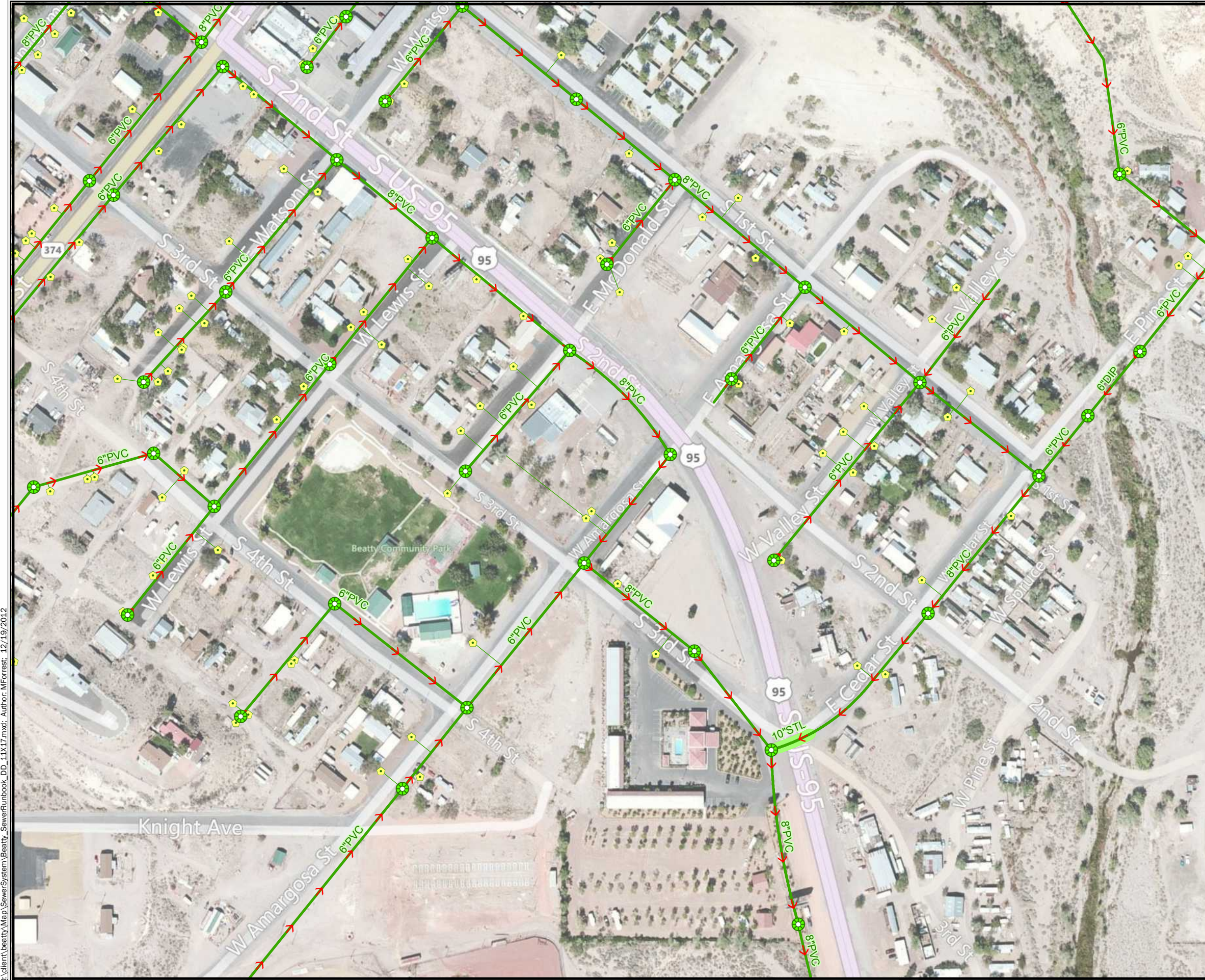
### Notes:

Background Imagery & Street Information Data pulled from Bing Online Imagery & Streets

### Index Map







C:\valent\beatty\Map\SewerSystem\Beatty\_SewerRunbook\_DD\_11X17.mxd; Author: MForrest; 12/19/2012



**FARR WEST**  
ENGINEERING

1" = 200'

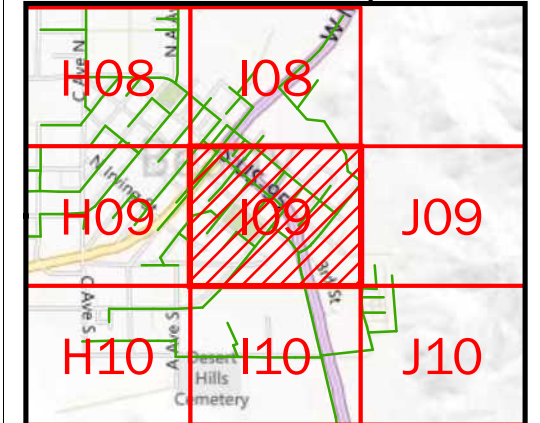
# Beatty, NV Sewer System Runbook

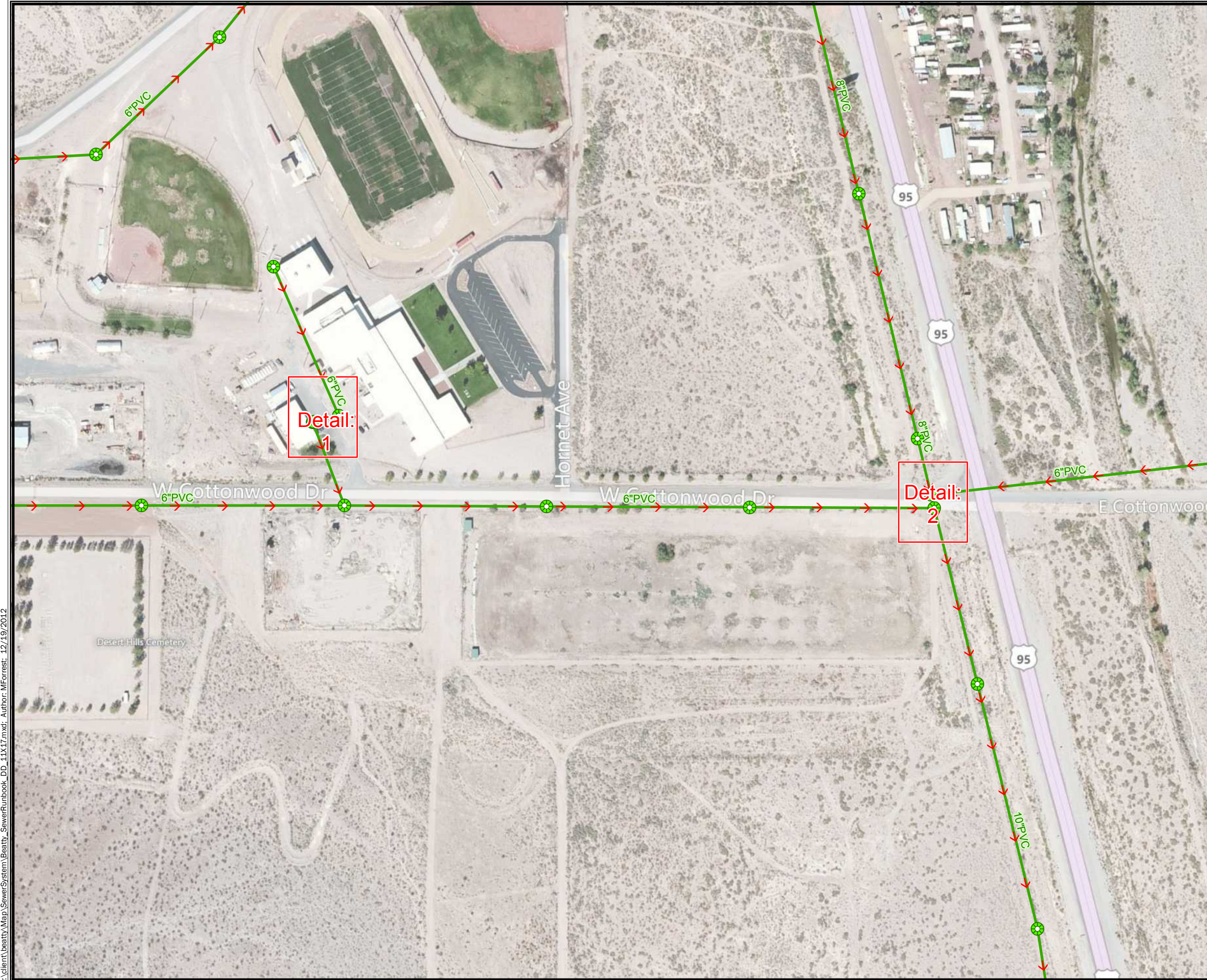
## Legend

- |  |                           |  |                 |
|--|---------------------------|--|-----------------|
|  | Sewer Manhole             |  | Sewer Pipe Type |
|  | Lateral Cleanout          |  | Gravity Main    |
|  | Main Line Cleanout        |  | Forced Main     |
|  | Air Release               |  | Leach           |
|  | Sewer Inlet               |  | Lateral         |
|  | Sewer Outlet              |  | Other           |
|  | Sewer Pump / Lift Station |  | Casing          |
|  | Pond                      |  | Detail Boundary |

**Notes:**  
Background Imagery & Street Information Data pulled from Bing Online Imagery & Streets

## Index Map





C:\valent\beatty\Map\SewerSystem\Beatty\_SewerRunbook\_DD\_11X17.mxd; Author: MForrest; 12/19/2012



**FARR WEST**  
ENGINEERING

1" = 200'

## Beatty, NV Sewer System Runbook

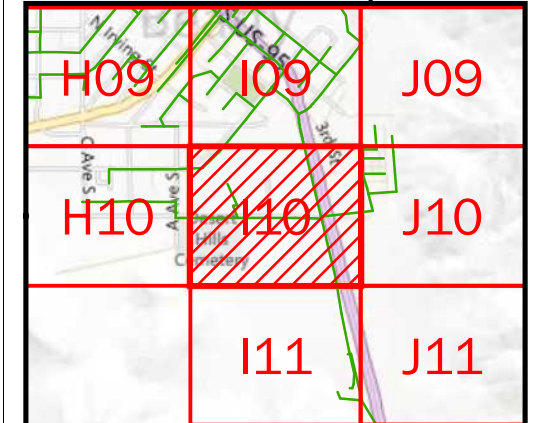
### Legend

- |  |                           |  |                 |
|--|---------------------------|--|-----------------|
|  | Sewer Manhole             |  | Sewer Pipe Type |
|  | Lateral Cleanout          |  | Gravity Main    |
|  | Main Line Cleanout        |  | Forced Main     |
|  | Air Release               |  | Leach           |
|  | Sewer Inlet               |  | Lateral         |
|  | Sewer Outlet              |  | Other           |
|  | Sewer Pump / Lift Station |  | Casing          |
|  | Pond                      |  | Detail Boundary |

### Notes:

Background Imagary & Street Information Data pulled from Bing Online Imagary & Streets

### Index Map







C:\valent\beatty\Map\SewerSystem\Beatty\_SewerRunbook\_DD\_11X17.mxd; Author: MForrest; 12/19/2012



**FARR WEST**  
ENGINEERING

1" = 200'

## Beatty, NV Sewer System Runbook

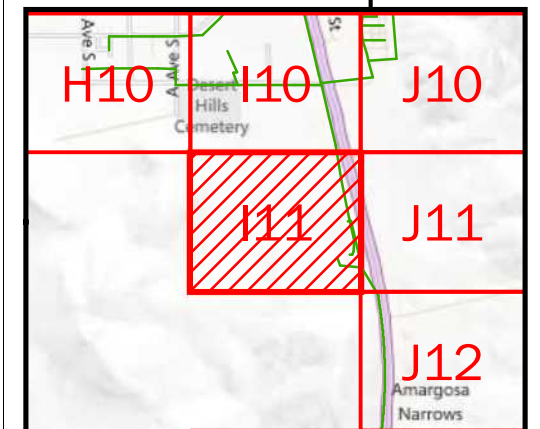
### Legend

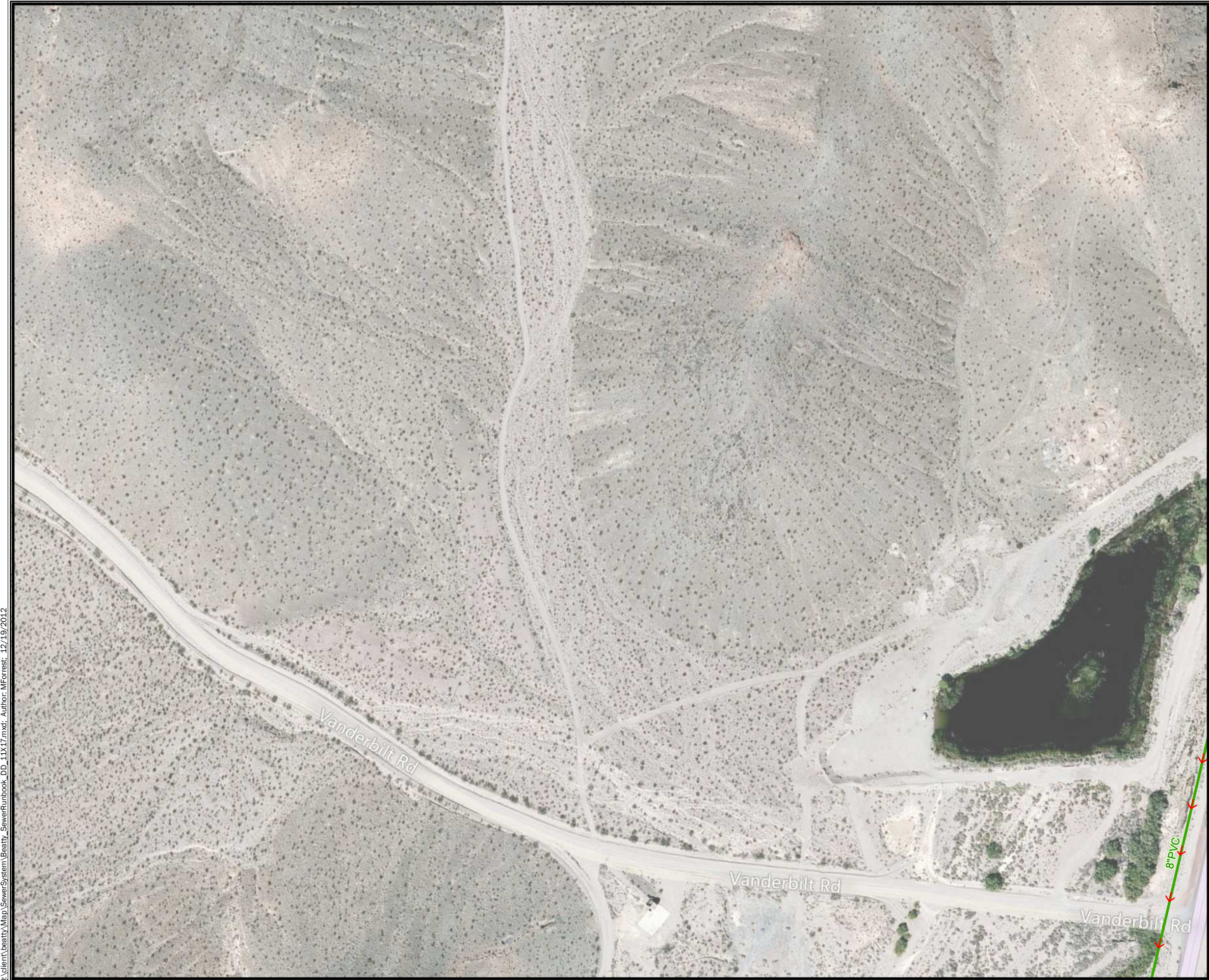
	Sewer Manhole		Sewer Pipe Type
	Lateral Cleanout		Gravity Main
	Main Line Cleanout		Forced Main
	Air Release		Leach
	Sewer Inlet		Lateral
	Sewer Outlet		Other
	Sewer Pump / Lift Station		Casing
	Pond		Detail Boundary

### Notes:

Background Imagery & Street Information Data pulled from Bing Online Imagery & Streets

### Index Map





C:\valent\beatty\Map\SewerSystem\Beatty\_SewerRunbook\_DD\_11X17.mxd. Author: MForrest. 12/19/2012



**FARR WEST**  
ENGINEERING

1" = 200'

## Beatty, NV Sewer System Runbook

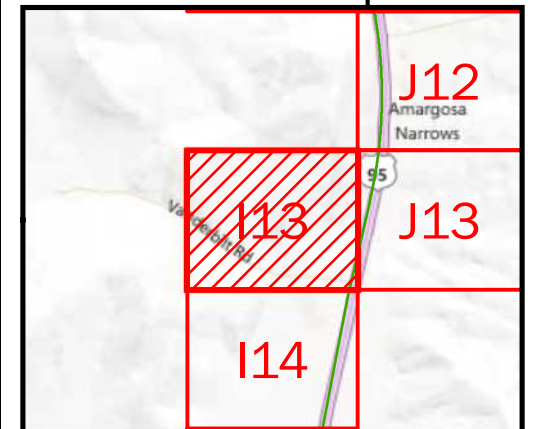
### Legend

	Sewer Manhole	<b>Sewer Pipe Type</b>	
	Lateral Cleanout		Gravity Main
	Main Line Cleanout		Forced Main
	Air Release		Leach
	Sewer Inlet		Lateral
	Sewer Outlet		Other
	Sewer Pump / Lift Station		Casing
	Pond		Detail Boundary

### Notes:

Background Imagery & Street Information Data pulled from Bing Online Imagery & Streets

### Index Map





C:\valent\beatty\Map\SewerSystem\Beatty\_SewerRunbook\_DD\_11X17.mxd. Author: MForrest. 12/19/2012



**FARR WEST**  
ENGINEERING

1" = 200'

## Beatty, NV Sewer System Runbook

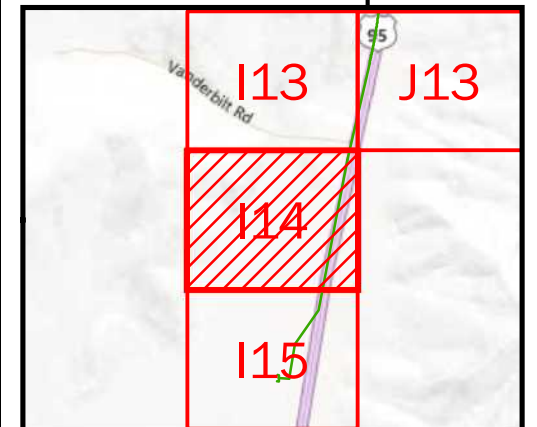
### Legend

	Sewer Manhole		Sewer Pipe Type
	Lateral Cleanout		Gravity Main
	Main Line Cleanout		Forced Main
	Air Release		Leach
	Sewer Inlet		Lateral
	Sewer Outlet		Other
	Sewer Pump / Lift Station		Casing
	Pond		Detail Boundary

### Notes:

Background Imagary & Street Information Data pulled from Bing Online Imagary & Streets

### Index Map





C:\valent\beatty\Map\SewerSystem\Beatty\_SewerRunbook\_DD\_11X17.mxd. Author: MForrest. 12/19/2012



**FARR WEST**  
ENGINEERING

1" = 200'

## Beatty, NV Sewer System Runbook

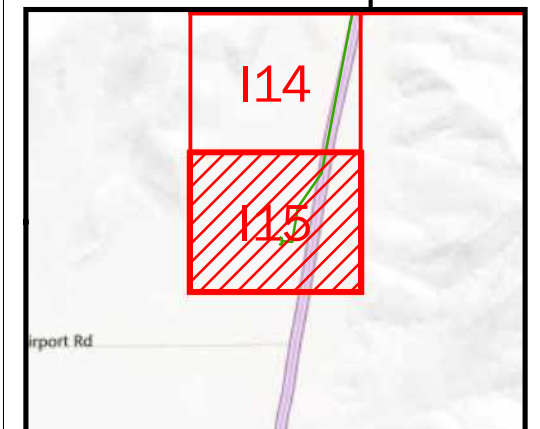
### Legend

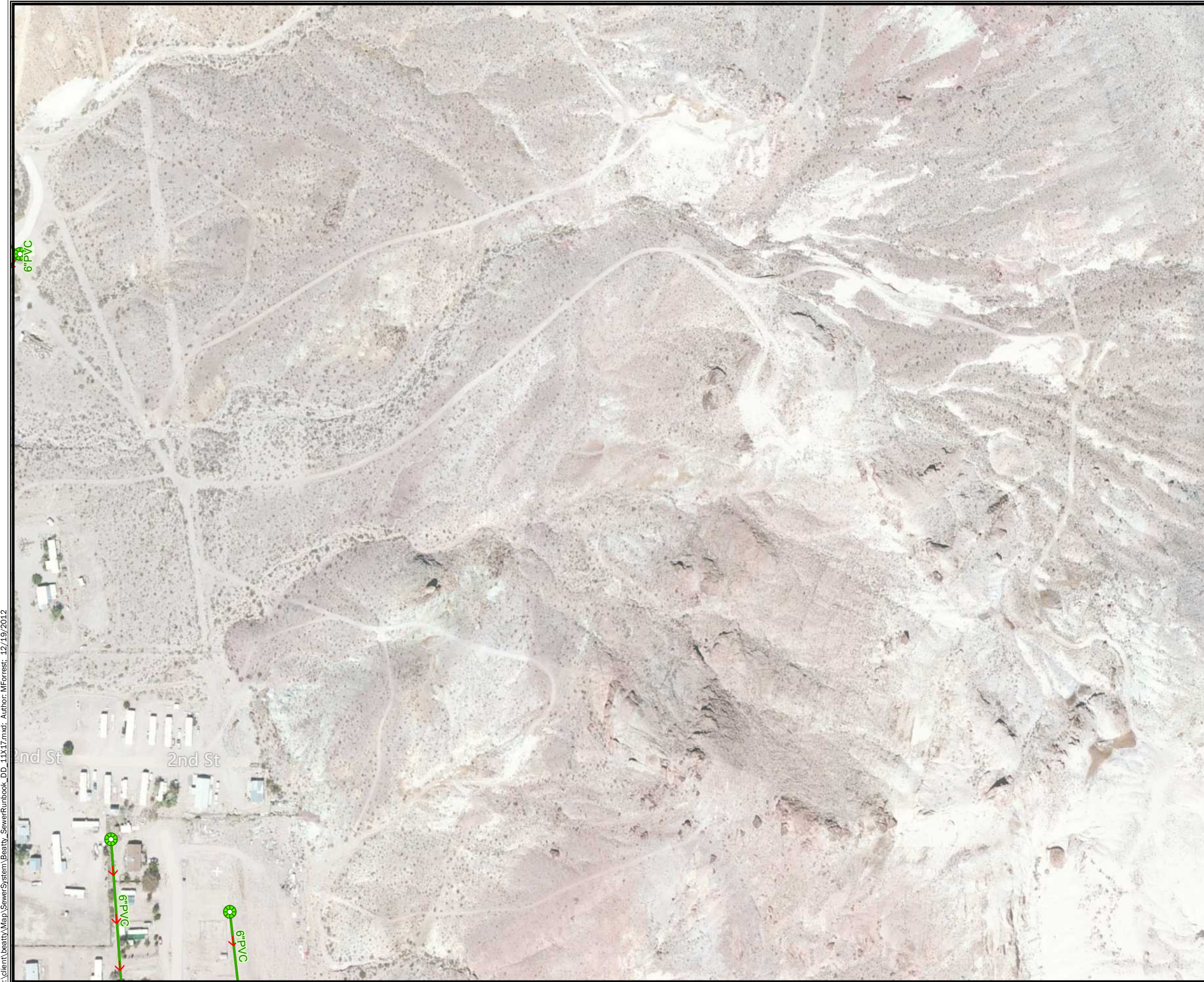
	Sewer Manhole		Sewer Pipe Type
	Lateral Cleanout		Gravity Main
	Main Line Cleanout		Forced Main
	Air Release		Leach
	Sewer Inlet		Lateral
	Sewer Outlet		Other
	Sewer Pump / Lift Station		Casing
	Pond		Detail Boundary

### Notes:

Background Imagery & Street Information Data pulled from Bing Online Imagery & Streets

### Index Map





C:\valent\beatty\Map\SewerSystem\Beatty\_SewerRunbook\_DD\_11X17.mxd; Author: MForrest; 12/19/2012



**FARR WEST**  
ENGINEERING

1" = 200'

## Beatty, NV Sewer System Runbook

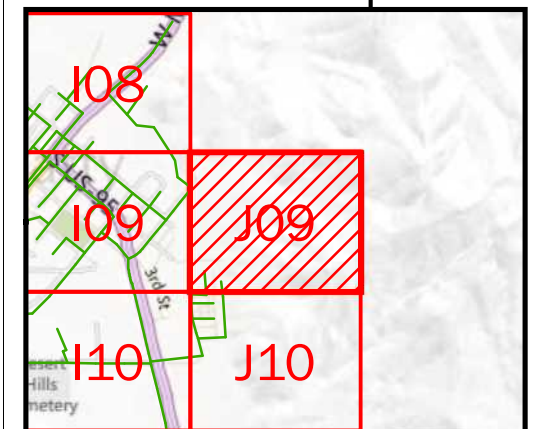
### Legend

	Sewer Manhole	<b>Sewer Pipe Type</b>
	Lateral Cleanout	Gravity Main
	Main Line Cleanout	Forced Main
	Air Release	Leach
	Sewer Inlet	Lateral
	Sewer Outlet	Other
	Sewer Pump / Lift Station	Casing
	Pond	Detail Boundary

### Notes:

Background Imagery & Street Information Data pulled from Bing Online Imagery & Streets

### Index Map





116° 45'9"W 36° 54'11"N

116° 44'39"W 36° 54'11"N



C:\client\beatty\Map\SewerSystem\Beatty\_SewerRunbook\_DD\_1X17.mxd. Author: MForrest. 12/19/2012

116° 45'9"W 36° 53'52"N

116° 44'39"W 36° 53'52"N



**FARR WEST**  
ENGINEERING

1" = 200'

## Beatty, NV Sewer System Runbook

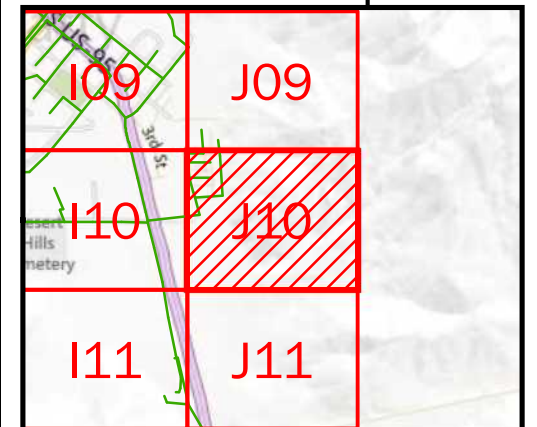
### Legend

	Sewer Manhole		Sewer Pipe Type
	Lateral Cleanout		Gravity Main
	Main Line Cleanout		Forced Main
	Air Release		Leach
	Sewer Inlet		Lateral
	Sewer Outlet		Other
	Sewer Pump / Lift Station		Casing
	Pond		Detail Boundary

### Notes:

Background Imagery & Street Information Data pulled from Bing Online Imagery & Streets

### Index Map





C:\valent\beatty\Map\SewerSystem\Beatty\_SewerRunbook\_DD\_11X17.mxd. Author: MForrest. 12/19/2012



**FARR WEST**  
ENGINEERING

1" = 200'

## Beatty, NV Sewer System Runbook

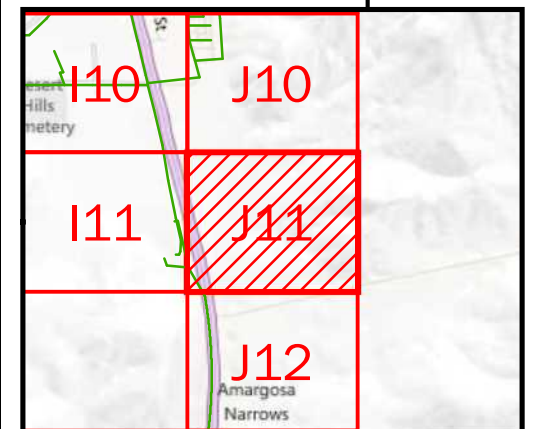
### Legend

	Sewer Manhole	<b>Sewer Pipe Type</b>
	Lateral Cleanout	Gravity Main
	Main Line Cleanout	Forced Main
	Air Release	Leach
	Sewer Inlet	Lateral
	Sewer Outlet	Other
	Sewer Pump / Lift Station	Casing
	Pond	Detail Boundary

### Notes:

Background Imagery & Street Information Data pulled from Bing Online Imagery & Streets

### Index Map





C:\valent\beatty\Map\SewerSystem\Beatty\_SewerRunbook\_DD\_1X17.mxd. Author: MForrest. 12/19/2012



**FARR WEST**  
ENGINEERING

1" = 200'

## Beatty, NV Sewer System Runbook

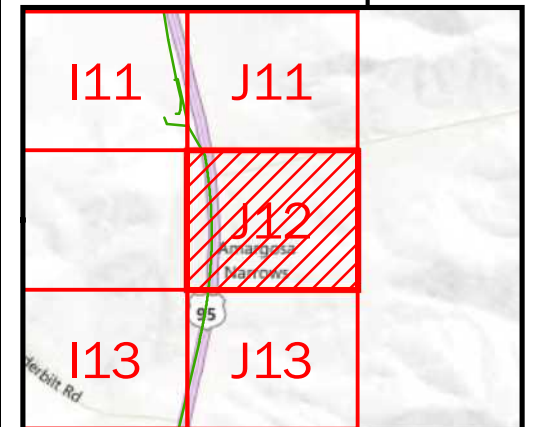
### Legend

	Sewer Manhole	<b>Sewer Pipe Type</b>
	Lateral Cleanout	Gravity Main
	Main Line Cleanout	Forced Main
	Air Release	Leach
	Sewer Inlet	Lateral
	Sewer Outlet	Other
	Sewer Pump / Lift Station	Casing
	Pond	Detail Boundary

### Notes:

Background Imagery & Street Information Data pulled from Bing Online Imagery & Streets

### Index Map





C:\valent\beatty\Map\SewerSystem\Beatty\_SewerRunbook\_DD\_11X17.mxd. Author: MForrest. 12/19/2012



**FARR WEST**  
ENGINEERING

1" = 200'

## Beatty, NV Sewer System Runbook

### Legend

	Sewer Manhole	<b>Sewer Pipe Type</b>	
	Lateral Cleanout		Gravity Main
	Main Line Cleanout		Forced Main
	Air Release		Leach
	Sewer Inlet		Lateral
	Sewer Outlet		Other
	Sewer Pump / Lift Station		Casing
	Pond		Detail Boundary

### Notes:

Background Imagery & Street Information Data pulled from Bing Online Imagery & Streets

### Index Map

